



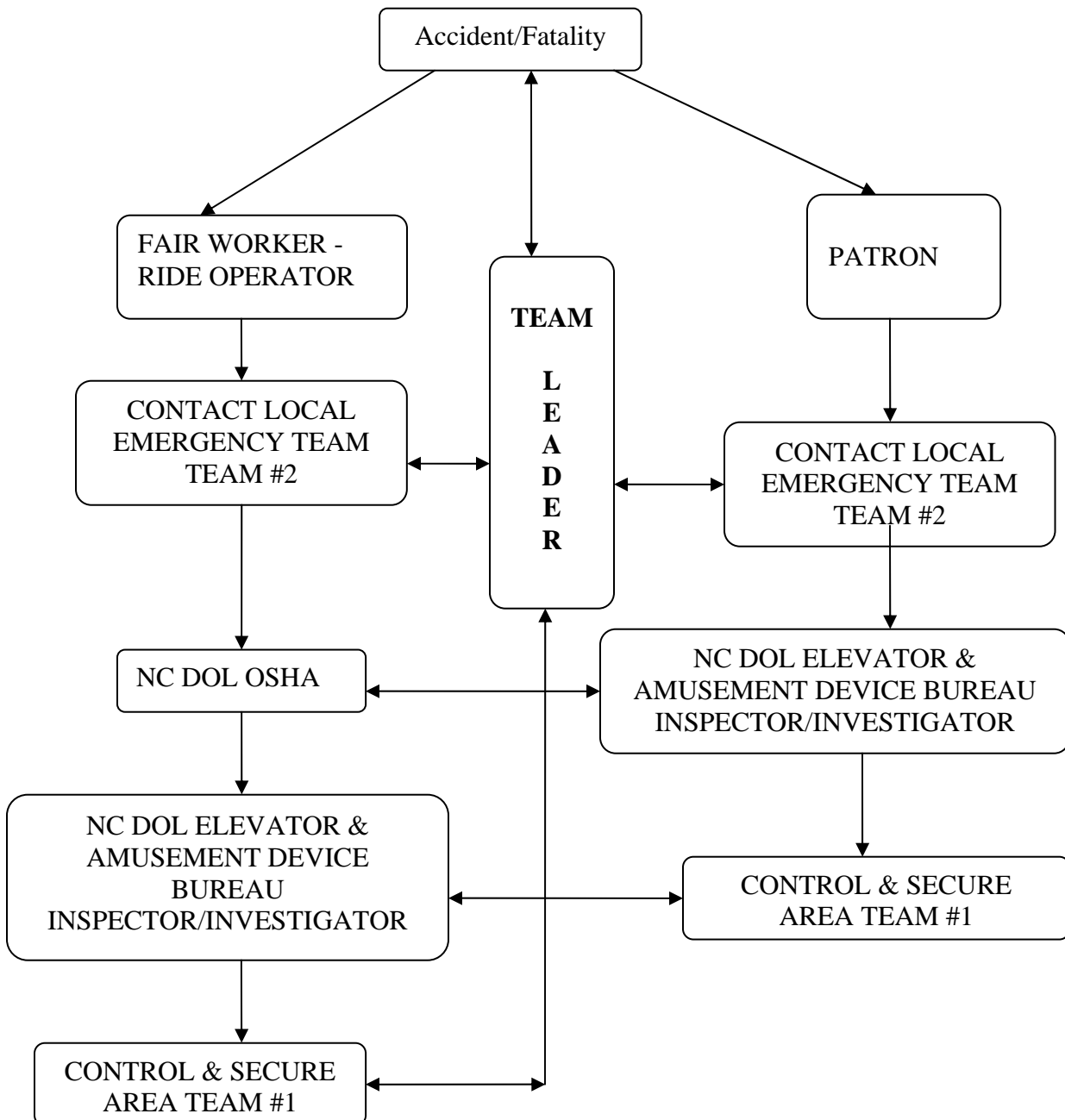
NC DOL ELEVATOR & AMUSEMENT DEVICE BUREAU

ACCIDENT INFORMATION GUIDE

The Fair Response Team is made up of the following members:

1. Team Leader
2. Area Control Team
3. Communications Team
4. Documentation Team

Flow Chart for Reporting if Accident Results in Medical Transport or Fatality



AREA CONTROL

1. Tape Off Effected Area
2. Direct Patrons out of the Area
3. Do Not Disturb Any Evidence (mechanical parts, biological, clothing, ect)

Also, you should have the contact information from your amusement company who is their Ride Emergency Responder.

We suggest that each Fair Partner map and number rides for easier location of areas during an emergency. Distribute information to Emergency Support Authorities.

Command Center Kits

1. Flashlight provided by Fair Team
2. Caution Tape
3. Witness Forms
4. Flags
5. Camera provided by Fair Team
6. (PPE) Personal Protection Equipment
7. Glove & Blood borne Pathogen's Kit, etc

Team Assignments –

Team #1

- Secure effected area
- Preserve evidence
- Control crowd

Team #2

- Contact emergency (911), NC DOL & NC OSHA
- Assist Team 1 & 3

Team #3

- Interview Witnesses
- Photo Document Area
- Obtain Copies of EMS & Police Reports
- Stand By to Communicate Findings to NCDOL
-