

# DANGER



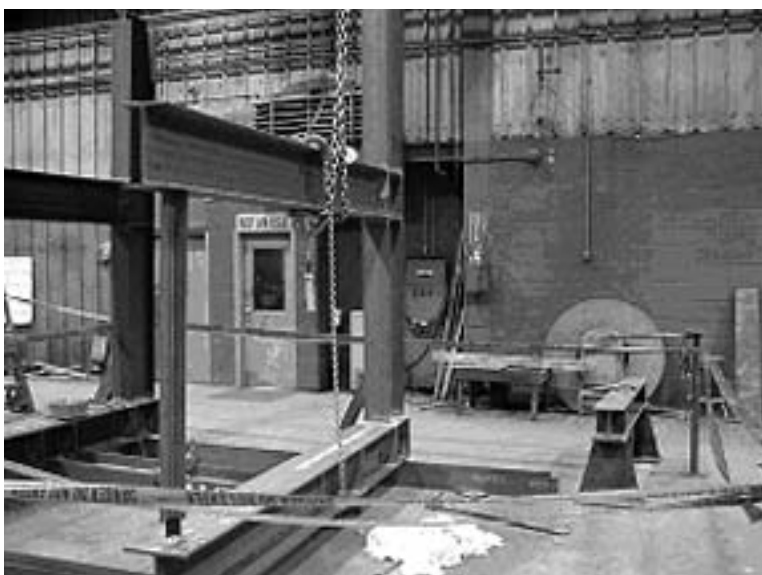
Cherie K. Berry  
Commissioner

## IN AND AROUND MINES

# Fatal Accident

04-01

## NORTH CAROLINA EXPERIENCED ONE FATAL ACCIDENT IN 2003



On May 15, 2003, a 51-year-old master welder with 30 years of mining experience was fatally injured at a heavy equipment maintenance shop while fabricating a screen tower section. With the help of an overhead bridge crane operator using a hand held remote control, the victim was in the process of aligning pre-drilled holes on the last two components of the structure when he realized the holes did not align. After other efforts failed to align the holes, it was decided to use the crane to move the vertical section into place. While the victim was standing on the unsupported lower beam, communicating with the crane oper-

ator and trying to position a chain sling, the vertical section he was standing on started to wobble and then fell. The victim was pinned to the floor when the structure fell on him as he tried to get out of the way.

### CORRECTIVE ACTIONS TO PREVENT SIMILAR ACCIDENTS

- **Ensure** task training is provided before any task is conducted.
- **Evaluate** all tasks and identify potential hazards before performing the task.
- **When** rigging, use nylon slings, hooks with safety latches, and pad-eyes.
- **Never** perform work on unstable freestanding structures until the structures are properly secured.